



APPENDIX D

EJ Screen Report

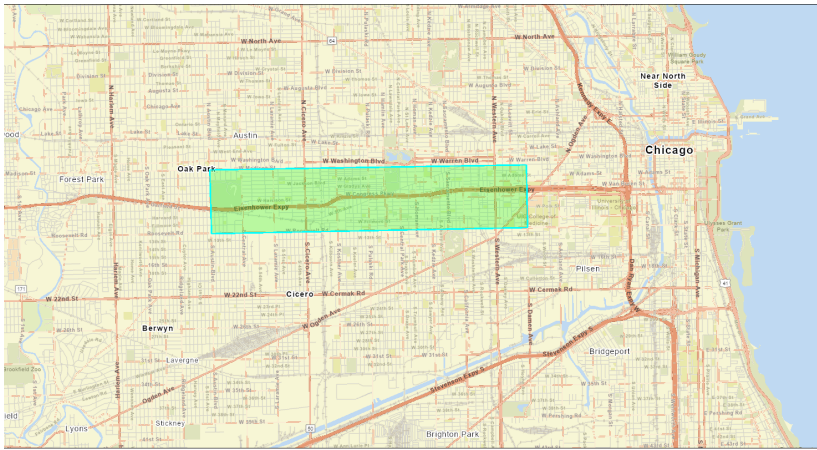


EJScreen Community Report

This report provides environmental and socioeconomic information for user-defined areas, and combines that data into environmental justice and supplemental indexes.

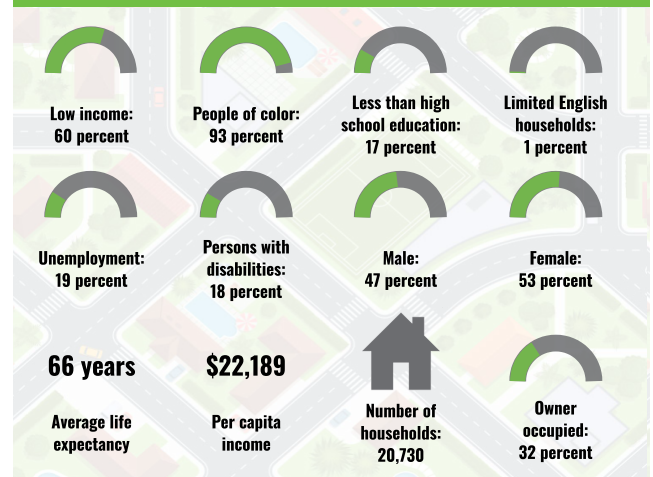
Chicago, IL

the User Specified Area
Population: 57,091
Area in square miles: 5.08

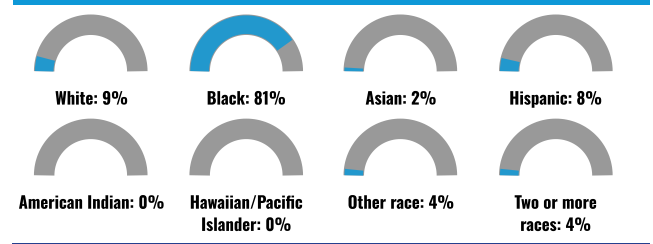


October 7, 2023
Project 1
City of Chicago, Esri, HERE, Garmin, SafeGraph, GeoTechnologies, Inc, METRACIA, USGS, EPA, NPS, USDA
1:72,224
0 0.5 1 2 4 km

COMMUNITY INFORMATION



BREAKDOWN BY RACE



BREAKDOWN BY AGE



LIMITED ENGLISH SPEAKING BREAKDOWN



LANGUAGES SPOKEN AT HOME

LANGUAGE	PERCENT
English	90%
Spanish	7%
Other Indo-European	1%
Total Non-English	10%

Notes: Numbers may not sum to totals due to rounding. Hispanic population can be of any race. Source: U.S. Census Bureau, American Community Survey (ACS) 2017-2021. Life expectancy data comes from the Centers for Disease Control.

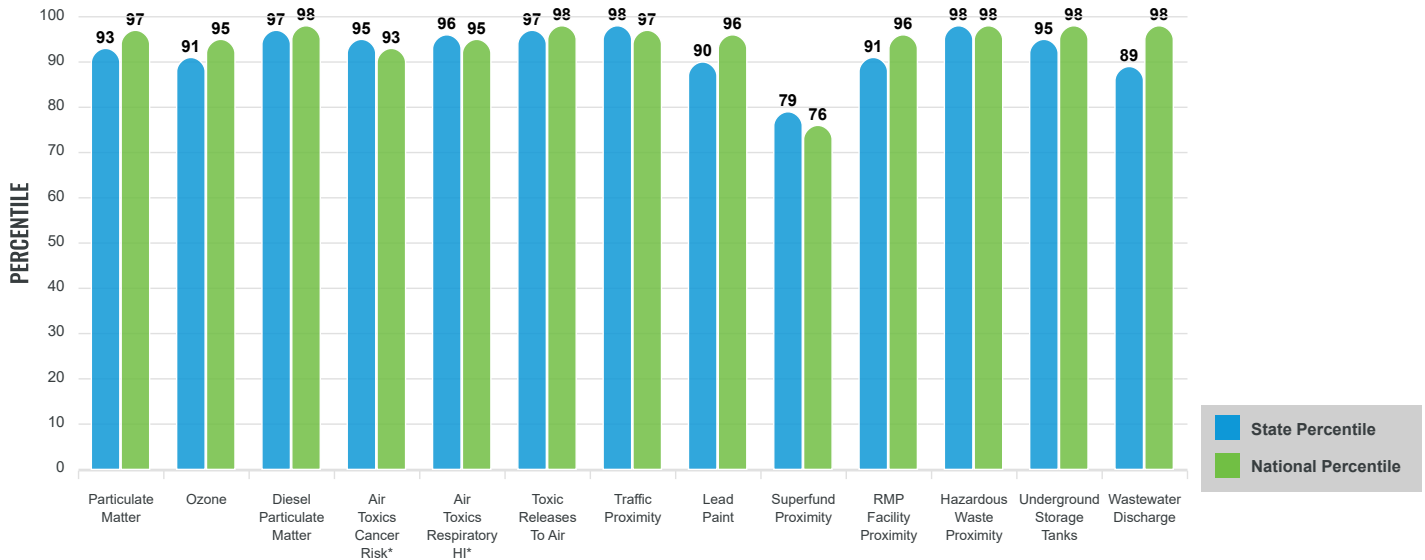
Environmental Justice & Supplemental Indexes

The environmental justice and supplemental indexes are a combination of environmental and socioeconomic information. There are thirteen EJ indexes and supplemental indexes in EJScreen reflecting the 13 environmental indicators. The indexes for a selected area are compared to those for all other locations in the state or nation. For more information and calculation details on the EJ and supplemental indexes, please visit the [EJScreen website](#).

EJ INDEXES

The EJ indexes help users screen for potential EJ concerns. To do this, the EJ index combines data on low income and people of color populations with a single environmental indicator.

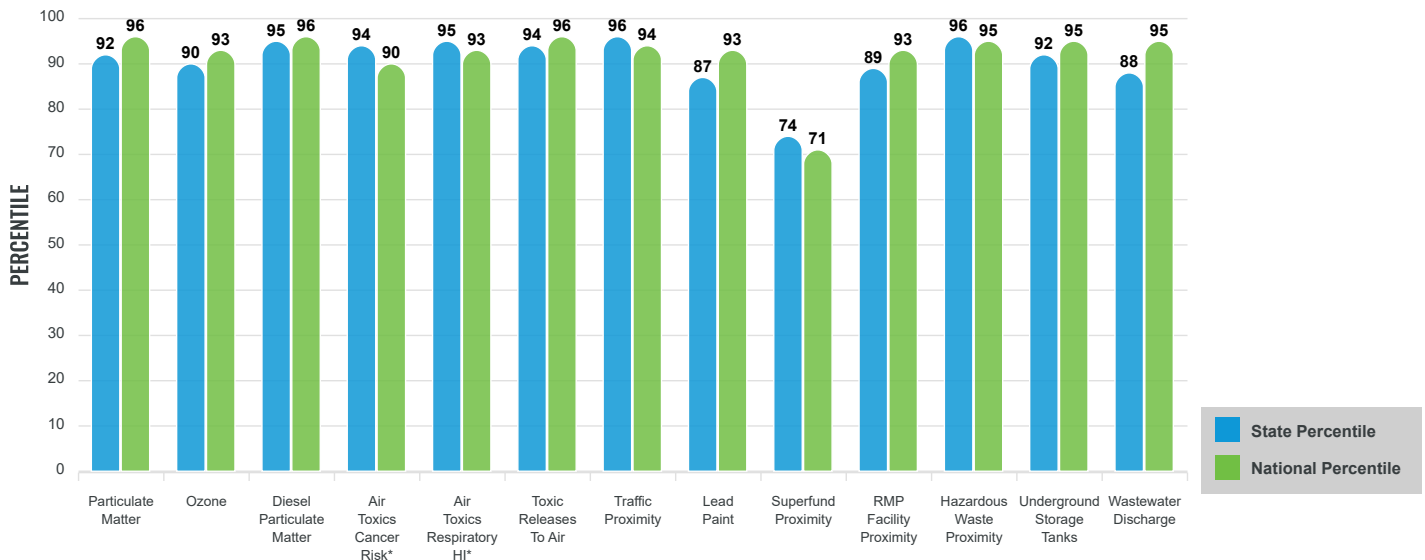
EJ INDEXES FOR THE SELECTED LOCATION



SUPPLEMENTAL INDEXES

The supplemental indexes offer a different perspective on community-level vulnerability. They combine data on percent low-income, percent linguistically isolated, percent less than high school education, percent unemployed, and low life expectancy with a single environmental indicator.

SUPPLEMENTAL INDEXES FOR THE SELECTED LOCATION



These percentiles provide perspective on how the selected block group or buffer area compares to the entire state or nation.

Report for the User Specified Area

EJScreen Environmental and Socioeconomic Indicators Data

SELECTED VARIABLES	VALUE	STATE AVERAGE	PERCENTILE IN STATE	USA AVERAGE	PERCENTILE IN USA
POLLUTION AND SOURCES					
Particulate Matter ($\mu\text{g}/\text{m}^3$)	10.1	9.44	78	8.08	92
Ozone (ppb)	65.5	63.6	66	61.6	78
Diesel Particulate Matter ($\mu\text{g}/\text{m}^3$)	0.605	0.358	92	0.261	94
Air Toxics Cancer Risk* (lifetime risk per million)	30	24	68	25	52
Air Toxics Respiratory HI*	0.4	0.29	78	0.31	70
Toxic Releases to Air	11,000	6,000	90	4,600	93
Traffic Proximity (daily traffic count/distance to road)	1,300	200	97	210	97
Lead Paint (% Pre-1960 Housing)	0.61	0.44	66	0.3	80
Superfund Proximity (site count/km distance)	0.041	0.095	40	0.13	37
RMP Facility Proximity (facility count/km distance)	0.8	0.72	73	0.43	84
Hazardous Waste Proximity (facility count/km distance)	6.9	1.7	95	1.9	93
Underground Storage Tanks (count/km ²)	21	8.6	88	3.9	96
Wastewater Discharge (toxicity-weighted concentration/m distance)	2	38	69	22	93
SOCIOECONOMIC INDICATORS					
Demographic Index	76%	34%	93	35%	93
Supplemental Demographic Index	24%	14%	89	14%	88
People of Color	93%	39%	88	39%	91
Low Income	60%	29%	90	31%	88
Unemployment Rate	19%	7%	92	6%	94
Limited English Speaking Households	1%	4%	58	5%	59
Less Than High School Education	17%	11%	79	12%	75
Under Age 5	7%	6%	63	6%	65
Over Age 64	12%	17%	34	17%	35
Low Life Expectancy	25%	20%	89	20%	90

*Diesel particulate matter, air toxics cancer risk, and air toxics respiratory hazard index are from the EPA's Air Toxics Data Update, which is the Agency's ongoing, comprehensive evaluation of air toxics in the United States. This effort aims to prioritize air toxics, emission sources, and locations of interest for further study. It is important to remember that the air toxics data presented here provide broad estimates of health risks over geographic areas of the country, not definitive risks to specific individuals or locations. Cancer risks and hazard indices from the Air Toxics Data Update are reported to one significant figure and any additional significant figures here are due to rounding. More information on the Air Toxics Data Update can be found at: <https://www.epa.gov/haps/air-toxics-data-update>.

Sites reporting to EPA within defined area:

Superfund	0
Hazardous Waste, Treatment, Storage, and Disposal Facilities	5
Water Dischargers	6
Air Pollution	
.	106
Brownfields	4
Toxic Release Inventory	9

Other community features within defined area:

Schools	29
Hospitals	5
Places of Worship	107

Other environmental data:

Air Non-attainment	Yes
Impaired Waters	Yes

Selected location contains American Indian Reservation Lands*	No
Selected location contains a "Justice40 (CEJST)" disadvantaged community	Yes
Selected location contains an EPA IRA disadvantaged community	Yes

Report for the User Specified Area

EJScreen Environmental and Socioeconomic Indicators Data

HEALTH INDICATORS

INDICATOR	HEALTH VALUE	STATE AVERAGE	STATE PERCENTILE	US AVERAGE	US PERCENTILE
Low Life Expectancy	25%	20%	89	20%	90
Heart Disease	6.7	5.7	68	6.1	62
Asthma	13.2	9.7	95	10	96
Cancer	4.7	6.1	21	6.1	21
Persons with Disabilities	17%	12.1%	82	13.4%	75

CLIMATE INDICATORS

INDICATOR	HEALTH VALUE	STATE AVERAGE	STATE PERCENTILE	US AVERAGE	US PERCENTILE
Flood Risk	17%	11%	82	12%	82
Wildfire Risk	0%	0%	0	14%	0

CRITICAL SERVICE GAPS

INDICATOR	HEALTH VALUE	STATE AVERAGE	STATE PERCENTILE	US AVERAGE	US PERCENTILE
Broadband Internet	22%	14%	79	14%	78
Lack of Health Insurance	9%	7%	73	9%	63
Housing Burden	Yes	N/A	N/A	N/A	N/A
Transportation Access	Yes	N/A	N/A	N/A	N/A
Food Desert	No	N/A	N/A	N/A	N/A

Footnotes

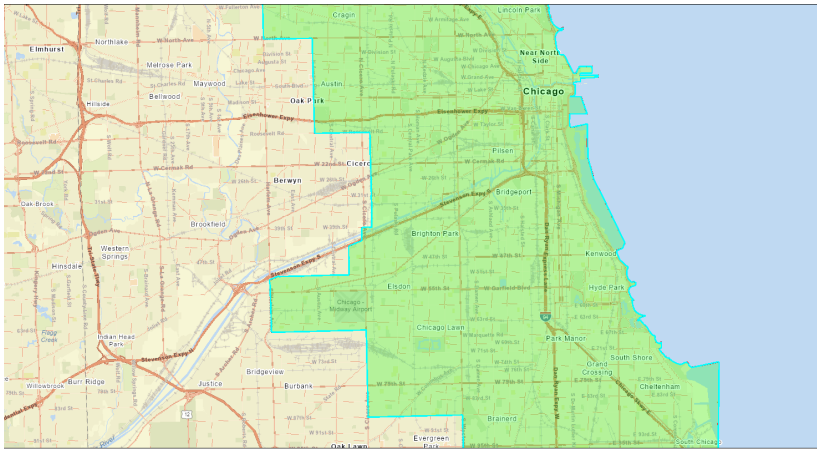
Report for the User Specified Area

EJScreen Community Report

This report provides environmental and socioeconomic information for user-defined areas, and combines that data into environmental justice and supplemental indexes.

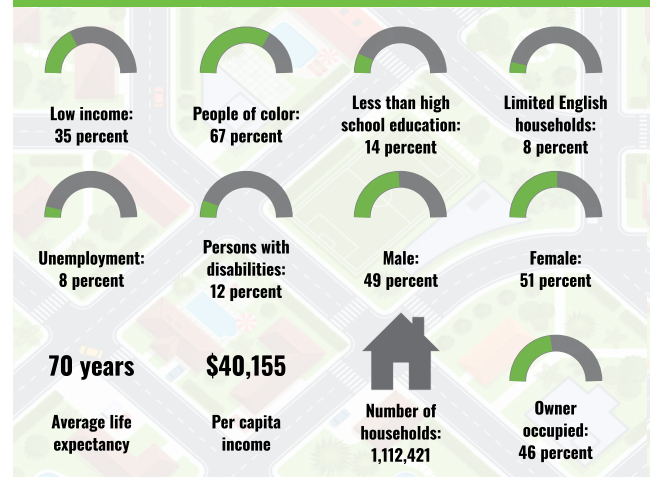
XX

City: Chicago
 Population: 2,741,707
 Area in square miles: 234.53

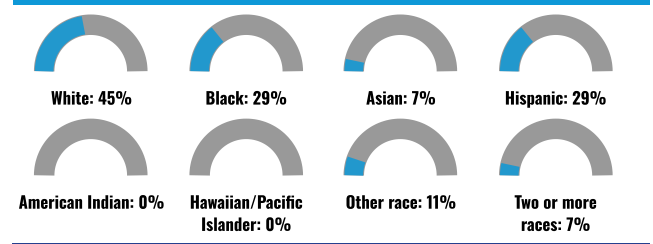


September 7, 2023
 Chicago
 City of Chicago, Esri, HERE, Garmin, Swire, GeoTechnologies, Inc, METRAGIS, USGS, EPA, NPS, USGS

COMMUNITY INFORMATION



BREAKDOWN BY RACE



BREAKDOWN BY AGE



LIMITED ENGLISH SPEAKING BREAKDOWN



LANGUAGES SPOKEN AT HOME

LANGUAGE	PERCENT
English	65%
Spanish	24%
French, Haitian, or Cajun	1%
Russian, Polish, or Other Slavic	3%
Other Indo-European	2%
Chinese (including Mandarin, Cantonese)	2%
Tagalog (including Filipino)	1%
Other Asian and Pacific Island	1%
Arabic	1%
Other and Unspecified	1%
Total Non-English	35%

Notes: Numbers may not sum to totals due to rounding. Hispanic population can be of any race. Source: U.S. Census Bureau, American Community Survey (ACS) 2017-2021. Life expectancy data comes from the Centers for Disease Control.

Environmental Justice & Supplemental Indexes

The environmental justice and supplemental indexes are a combination of environmental and socioeconomic information. There are thirteen EJ indexes and supplemental indexes in EJScreen reflecting the 13 environmental indicators. The indexes for a selected area are compared to those for all other locations in the state or nation. For more information and calculation details on the EJ and supplemental indexes, please visit the [EJScreen website](#).

EJ INDEXES

The EJ indexes help users screen for potential EJ concerns. To do this, the EJ index combines data on low income and people of color populations with a single environmental indicator.

SUPPLEMENTAL INDEXES

The supplemental indexes offer a different perspective on community-level vulnerability. They combine data on percent low-income, percent linguistically isolated, percent less than high school education, percent unemployed, and low life expectancy with a single environmental indicator.

These percentiles provide perspective on how the selected block group or buffer area compares to the entire state or nation.

Report for City: Chicago

EJScreen Environmental and Socioeconomic Indicators Data

SELECTED VARIABLES	VALUE	STATE AVERAGE	PERCENTILE IN STATE	USA AVERAGE	PERCENTILE IN USA
POLLUTION AND SOURCES					
Particulate Matter ($\mu\text{g}/\text{m}^3$)	XX	XX	XX	XX	XX
Ozone (ppb)	XX	XX	XX	XX	XX
Diesel Particulate Matter ($\mu\text{g}/\text{m}^3$)	XX	XX	XX	XX	XX
Air Toxics Cancer Risk* (lifetime risk per million)	XX	XX	XX	XX	XX
Air Toxics Respiratory HI*	XX	XX	XX	XX	XX
Toxic Releases to Air	XX	XX	XX	XX	XX
Traffic Proximity (daily traffic count/distance to road)	XX	XX	XX	XX	XX
Lead Paint (% Pre-1960 Housing)	XX	XX	XX	XX	XX
Superfund Proximity (site count/km distance)	XX	XX	XX	XX	XX
RMP Facility Proximity (facility count/km distance)	XX	XX	XX	XX	XX
Hazardous Waste Proximity (facility count/km distance)	XX	XX	XX	XX	XX
Underground Storage Tanks (count/km ²)	XX	XX	XX	XX	XX
Wastewater Discharge (toxicity-weighted concentration/m distance)	XX	XX	XX	XX	XX
SOCIOECONOMIC INDICATORS					
Demographic Index	XX%	XX%	XX	XX%	XX
Supplemental Demographic Index	XX%	XX%	XX	XX%	XX
People of Color	XX%	XX%	XX	XX%	XX
Low Income	XX%	XX%	XX	XX%	XX
Unemployment Rate	XX%	XX%	XX	XX%	XX
Limited English Speaking Households	XX%	XX%	XX	XX%	XX
Less Than High School Education	XX%	XX%	XX	XX%	XX
Under Age 5	XX%	XX%	XX	XX%	XX
Over Age 64	XX%	XX%	XX	XX%	XX
Low Life Expectancy	XX%	XX%	XX	XX%	XX

*Diesel particulate matter, air toxics cancer risk, and air toxics respiratory hazard index are from the EPA's Air Toxics Data Update, which is the Agency's ongoing, comprehensive evaluation of air toxics in the United States. This effort aims to prioritize air toxics, emission sources, and locations of interest for further study. It is important to remember that the air toxics data presented here provide broad estimates of health risks over geographic areas of the country, not definitive risks to specific individuals or locations. Cancer risks and hazard indices from the Air Toxics Data Update are reported to one significant figure and any additional significant figures here are due to rounding. More information on the Air Toxics Data Update can be found at: <https://www.epa.gov/haps/air-toxics-data-update>.

Sites reporting to EPA within defined area:

Superfund	XX
Hazardous Waste, Treatment, Storage, and Disposal Facilities	XX
Water Dischargers	XX
Air Pollution	XX
Brownfields	XX
Toxic Release Inventory	XX

Other community features within defined area:

Schools	XX
Hospitals	XX
Places of Worship	XX

Other environmental data:

Air Non-attainment	XX
Impaired Waters	XX

Selected location contains American Indian Reservation Lands*	XX
Selected location contains a "Justice40 (CEJST)" disadvantaged community	XX
Selected location contains an EPA IRA disadvantaged community	XX

Report for City: Chicago

EJScreen Environmental and Socioeconomic Indicators Data

HEALTH INDICATORS

INDICATOR	HEALTH VALUE	STATE AVERAGE	STATE PERCENTILE	US AVERAGE	US PERCENTILE
Low Life Expectancy	19%	20%	42	20%	43
Heart Disease	4.9	5.7	30	6.1	26
Asthma	9.9	9.7	67	10	52
Cancer	4.7	6.1	21	6.1	21
Persons with Disabilities	10.9%	12.1%	47	13.4%	39

CLIMATE INDICATORS

INDICATOR	HEALTH VALUE	STATE AVERAGE	STATE PERCENTILE	US AVERAGE	US PERCENTILE
Flood Risk	19%	11%	85	12%	84
Wildfire Risk	0%	0%	0	14%	0

CRITICAL SERVICE GAPS

INDICATOR	HEALTH VALUE	STATE AVERAGE	STATE PERCENTILE	US AVERAGE	US PERCENTILE
Broadband Internet	16%	14%	63	14%	64
Lack of Health Insurance	10%	7%	76	9%	67
Housing Burden	XX	N/A	N/A	N/A	N/A
Transportation Access	XX	N/A	N/A	N/A	N/A
Food Desert	XX	N/A	N/A	N/A	N/A

Footnotes

Report for City: Chicago